

Rochester, NY
[9052058]

Station Home

Recent Data as of 4/25/2023
11:24 AM Local Time

Water Level:
246.74 ft on IGLD (1985)
39.65 inches Above LWD

Air Temp: 47.8 ° F
Barometric Pressure: 1021.1 mb

Plot Data Standard Metric

UPDATE TO PROJECTIONS:

- REVIEW CURRENT CONDITIONS OF WEATHER & WATER
- REVIEW AQUATIC VEGETATION CONTROL PROGRAM AND UPDATE PLAN
- WHO NEEDS WHAT FOR MATERIALS FOR SUPPORT?
- OTHER PROJECTS GOING ON THE SHORELINE?

<https://tidesandcurrents.noaa.gov/map/>

Rochester, NY
[9052058]

Station Home

Recent Data as of 5/23/2023
1:24 PM Local Time

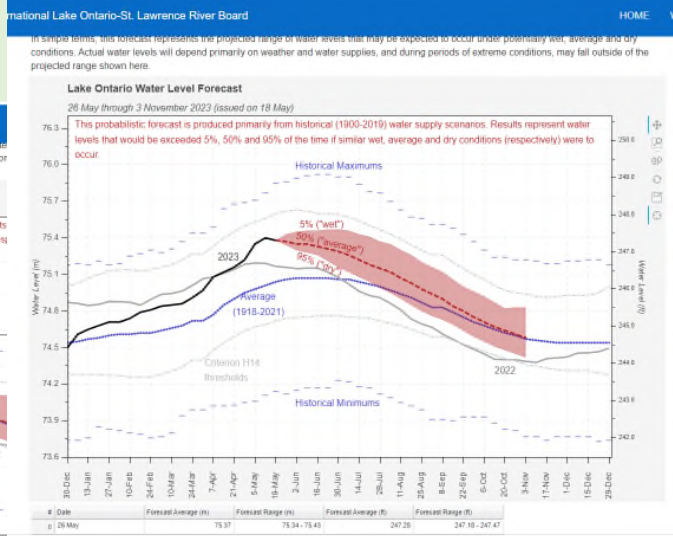
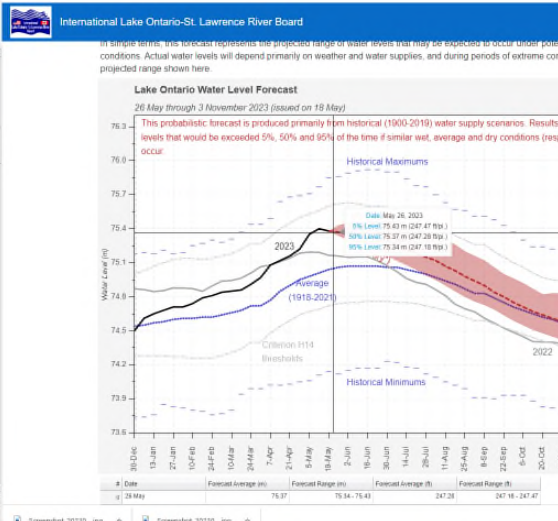
Water Level:
247.29 ft on IGLD (1985)
46.18 inches Above LWD

Air Temp: 55.8 ° F
Barometric Pressure: 1023.3 mb

Plot Data Standard Metric

Auto-Refresh:

Lake Level Projections



<https://ijc.org/en/loslrb/watershed/forecasts>

Aquatic Vegetation Control A.k.a Weed Harvesting 2023

- Summer Plan: 2 Crew, 4 boats (8 Crew Members of Part Time Status) 5 secured; looking for 3 more 16 hour schedules.
 - Crew 1 Operations on Sodus Bay North of Sodus Bay Bridge
 - Crew 2 Operations on Sodus Bay South of Sodus Bay Bridge for Water Chestnut Control; Port Bay, East Bay & Blind Sodus Bay & Maxwell Bay if water levels allow.
- First Day in water June 12, 2023 & Last Day September 1, 2023
- Projected Hours of Operation 2854, compared to last years 2080 = +774 returning
- Species monitoring will be conducted at the end of June and middle of July. Likely crew will be to Blind Sodus middle of July and late August.

OTHER PROJECTS & PARTNERS TO PAY ATTENTION TO:

WAYNE COUNTY SHORELINE STEERING COMMITTEE

- CLEAR – NYSDOS, NY SEA GRANT
- GREAT LAKES ASFPM PLANNING PROGRAM
- COASTAL RESILIENCE COORDINATION (NY SEA GRANT)

- COMMITTEE:

TOWN OF ONTARIO, WILLIASON, SODUS,
HURON & WOLCOTT

VILLAGE OF SODUS POINT

COUNTY DEPARTMENTS: ECONOMIC DEV. &
PLANNING, HIGHWAY & EMERGENCY
MANAGEMENT

GENESEE FINGER LAKES REGIONAL PLANNING
COUNCIL

WAYNE COUNTY SOIL & WATER

NEW YORK SEA GRANT

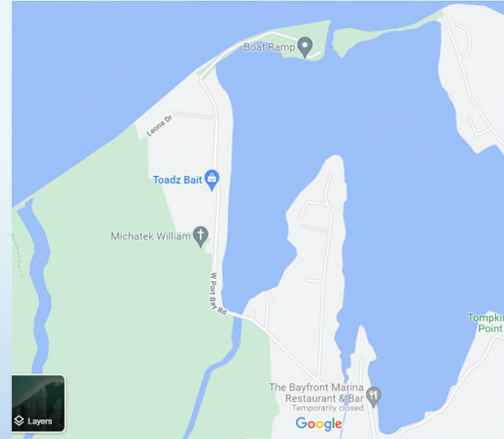
WILDLIFE POTENTIAL IMPACTS BEAVER CREEK CONNECTIVITY & MANAGEMENT PLAN WITH GLRI

PART OF MIGRATORY FLYWAY

IPAC IDENTIFIES 4 POTENTIAL SENSITIVE SPECIES AND 2 POTENTIAL
ENDANGERED SPECIES FOR CONSIDERATION (NORTHERN LONG-EAR
BAT AND BOG TURTLE WITH CONSIDERATION TO MONARCH
BUTTERFLIES)

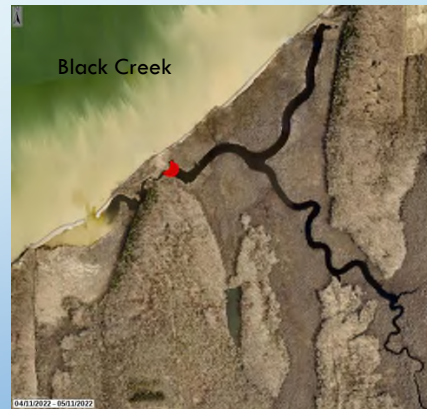
CONNECTS SEVERAL WILDLIFE AREAS AND CONNECTIVITY FOR
MANY SPECIES

BALANCED ECOSYSTEM FOR WATER QUALITY

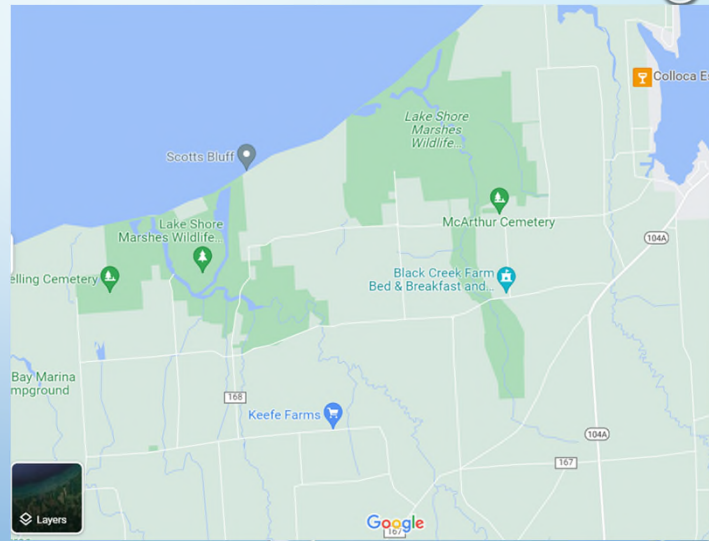


LAKESHORE MARSHES WILDLIFE MANAGEMENT UNITS OF BLACK CREEK AND RED CREEK, WOLCOTT NY

- INVASIVE SPECIES ISSUES
- SEDIMENT BERMING REDUCING FLOW
- AQUATIC CONNECTIVITY CONSIDERATIONS
- STORMWATER MANAGEMENT FOR STREAM SYSTEM
OUTLET TO OPEN WATER
- WILDLIFE HABITAT CHALLENGES RELATED TO INVASIVE
SPECIES



PRESERVATION OF HABITAT PLANNING & CONNECTIVITY



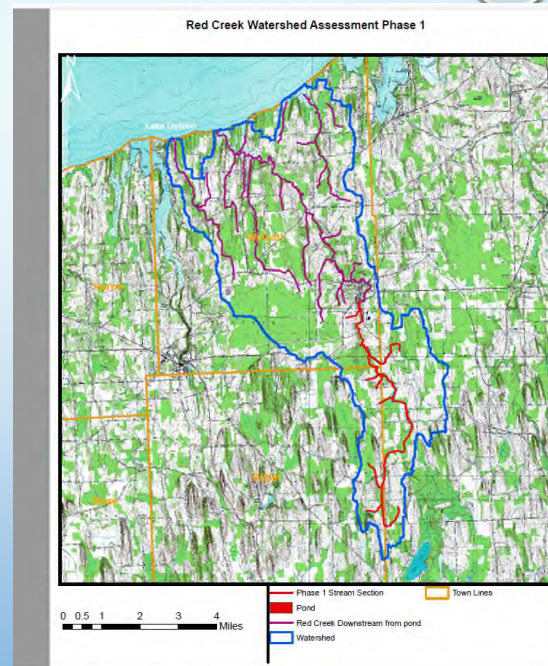
RED CREEK MILL POND

MAJOR AQUATIC CONNECTION BARRIER

WOULD LOVE TO ON HOW TO MOVE TOWARDS A PROJECT SUCH AS **PROJECT**

NAME: SMITH MILLS: SILVER CREEK RESERVOIR DAM REMOVAL AND REHABILITATION

[HTTPS://SOILWATER.ORG/AQUATIC-CONNECTIVITY/](https://soilwater.org/aquatic-connectivity/)



REDI UPDATE

BLIND SODUS BAY WESTERN BLUFF

- WORKING DAILY WITH SEAN ROSNEY & ANN SHAW ON FINAL PAPERWORK
- PROJECT IMPLEMENTATION CONTINUES AND STARTED BACK UP TWO WEEKS AGO ON WESTERN BLUFF SITE

BLIND SODUS BAY EASTERN BARRIER BAR

- MEETING WITH LANDOWNERS WHO REQUIRE EASEMENTS THIS WEEK
- 100% DESIGN AND BID PACKET SUBMITTED TO REDI COMMISSION FOR FINAL REVIEW BEFORE GOING TO BID.

PORT BAY BARRIER BAR

- MONITORING IS CONTINUING
- 90% DESIGN PREPARATIONS ARE BEING FINALIZED THIS WEEK FOR SUBMISSION
- 90% WILL INCLUDE FIRST ROUND OF PERMIT REVIEW



UP AND COMING:

Sterling and Wolcott Creeks Watershed

The **next public meeting will be held on Thursday, June 15, 4:00pm-5:30pm**. This will be a presentation to provide the public with an overview of the Sterling and Wolcott Creeks IWAP initiative, findings from the process, and updated project recommendations. If you have not registered yet, please [click here](#).

We want to thank you again for your time and feedback throughout this project's progression, and look forward to seeing these project recommendations turn into actions! Please feel free to reach out to the team through email at SterlingWolcott@ramboll.com, or to DEC Great Lakes Program staff at greatlakes@dec.ny.gov for any comments or questions related to the project.